

**INSTALLATION REQUIREMENTS**

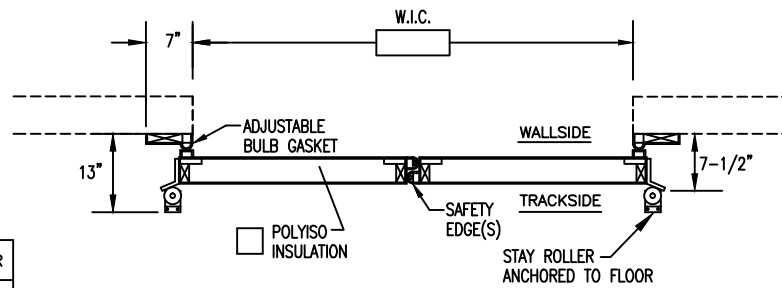
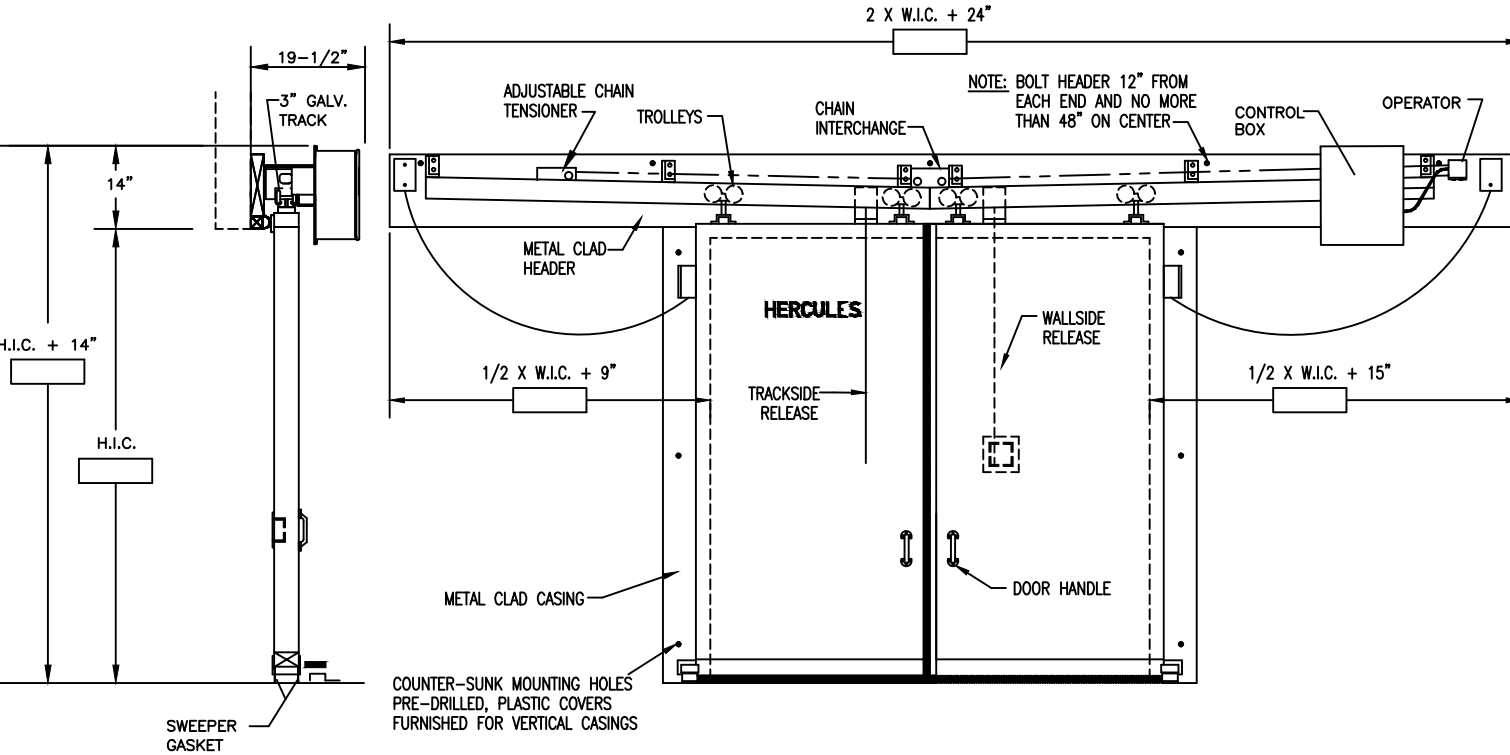
- I. THE FLOOR UNDER THE DOOR MUST BE LEVEL AND SMOOTH
- II. THE WALL BEHIND THE DOOR FRAME MUST BE SMOOTH AND IN A COMMON PLANE

**DOOR PANEL AND FRAME**

1. DOOR THICKNESS  
4" 6" (FREEZER ONLY)
2. TEMPERATURES  
WALL SIDE TRACKSIDE  
= \_\_\_\_ °F = \_\_\_\_ F
3. SLIDE DIRECTION  
LEFT  
RIGHT
4. PANEL AND FRAME CLADDING  
WHITE STUCCO EMBOSSED GALV STEEL  
MILL FINISH STUCCO EMBOSSED STEEL  
STAINLESS STEEL  
SANDSTONE STUCCO EMBOSSED GALV STEEL  
WHITE STUCCO EMBOSSED ALUMINUM  
MILL FINISH STUCCO EMBOSSED ALUMINUM
5. JAMBS  
JAMB DEPTH \_\_\_\_\_  
HDPE CLAD IN SAME MATL AS DOOR  
CHANNEL TRIM  
OTHER
6. OPERATOR  
STANDARD OPERATOR  
HIGH SPEED OPERATOR

**OPTIONS**

7. FREEZER DOOR  
HEATER WIRE RUN AROUND PERIMETER OF DOOR LEAF AND IN BOTTOM OF DOOR
8. INSIDE CASINGS
9. HOOD  
MATCHED TO FACE OF DOOR  
OTHER
10. KICKPLATES  
TRACKSIDE WALLSIDE  
HEIGHT: 18" 24" 36" 48" OTHER  
ALUMINUM DIAMOND PLATE  
18 GA. STAINLESS STEEL  
16 GA. GALV. STEEL  
OTHER
11. VISION PANEL  
12 3/4" X 12 3/4" INSULATED  
12 3/4" X 12 3/4" HEATED  
OTHER
12. LOCKING DEVICE  
TRACKSIDE WALLSIDE  
WITH POWER CUTOFF AND SAFETY RELEASE  
WITH POWER CUTOFF - NO SAFETY RELEASE
13. RADIO CONTROL
14. TIMER DELAY CLOSE
15. PHOTOCCELL  
 TO OPEN  AS SAFETY
16. MOTION DETECTOR  
 TO OPEN  AS SAFETY
17. LOOP DETECTOR  
 TO OPEN  AS SAFETY



NOTE: ALL FREEZER DOORS MUST HAVE SEPERATE 120 VOLT SUPPLY FOR HEATER CABLES FOR EACH DOOR

DRAWING NOTES—PLEASE SPECIFY ALL AREAS MARKED OTHER

OPTION NUMBER	DESCRIPTION

JOB	DOOR NO.	QTY.	W.I.C.	H.I.C.	USE	VOLTAGE	LOCK	SAFETY RELEASE	FINISH COVERING	GAGE

**HERCULES**  
Renowned, resilient doors. By Kingspan

ELECTRIC BI-PARTING SLIDING DOOR

SCALE: NONE	DRAWN BY
DATE:	
For:	Job No.
	DRAWING NUMBER