

# ELECTRIC BI-PART SLIDING DOOR

**DOOR STYLE:**

ELECTRIC BI-PART SLIDING DOOR

**DOOR FRAME TYPE:**

THREE SIDED FACE CASINGS      RETURN JAMB  
INSIDE CASINGS

**OPENING SIZE:**

FINISHED OPENING WIDTH (W.I.C.):  
FINISHED OPENING HEIGHT (H.I.C.):      WALL THICKNESS:

**APPLICATION:**

COOLER      FREEZER      4" THICK      6" THICK

**ENTER ROOM TEMPERATURES:**

TEMPERATURE WALL SIDE:      F (PLEASE PROVIDE)  
TEMPERATURE TRACK SIDE:      F (PLEASE PROVIDE)

**CLADDING - TRACK SIDE:**

EMBOSSSED WHITE GALVANIZED.      STAINLESS STEEL, EMBOSSSED  
EMBOSSSED WHITE ALUMINUM  
CUSTOM

**CLADDING - WALL SIDE:**

EMBOSSSED WHITE GALVANIZED.      STAINLESS STEEL, EMBOSSSED  
EMBOSSSED WHITE ALUMINUM  
CUSTOM

**VISION WINDOW:**

HEATED      NON-HEATED      14" x 14"      14" x 24"

**KICK PLATE - TRACK SIDE:**

16 GA. GALVANIZED PLATE      1/8" DIAMOND PLATE      STAINLESS STEEL  
12" TALL      24" TALL      36" TALL      48" TALL

**KICK PLATE - WALL SIDE:**

16 GA. GALVANIZED PLATE      1/8" DIAMOND PLATE      STAINLESS STEEL  
12" TALL      24" TALL      36" TALL      48" TALL


**ADDITIONAL OPTIONS:**

TRACKSIDE LOCK WITH CUTOFF  
SAFETY RELEASE  
WALLSIDE LOCK WITH CUTOFF  
SAFETY RELEASE  
HEATED SEALS  
JAMB CHANNEL TRIM  
HIGH SPEED OPERATOR  
PARTIAL OPEN BUTTON

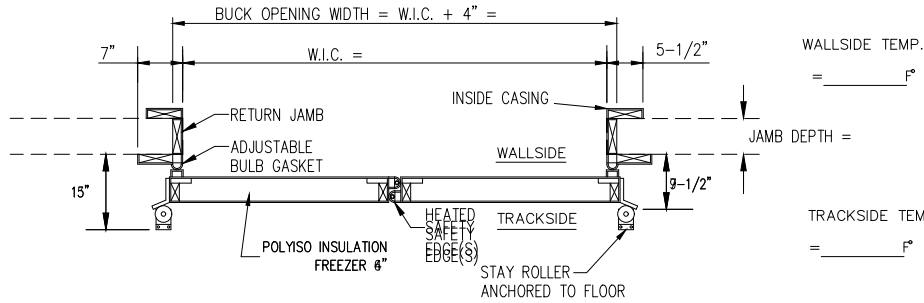
**APPLICATION (REQUIRED):**

1. IS THIS DOOR ON A BOX GREATER THAN 3000 SQ FEET?      YES      NO
2. IF NO, IS BOX LOCATED IN COLD STORAGE FACILITY/ATMOSPHERE WITH FLOOR AREA 3000 SQ FEET OR LARGER? (A/C IS NOT COLD STORAGE)      YES      NO
3. DOES THIS APPLICATION INVOLVE MEDICAL, SCIENTIFIC, OR RESEARCH FACILITIES?      YES      NO

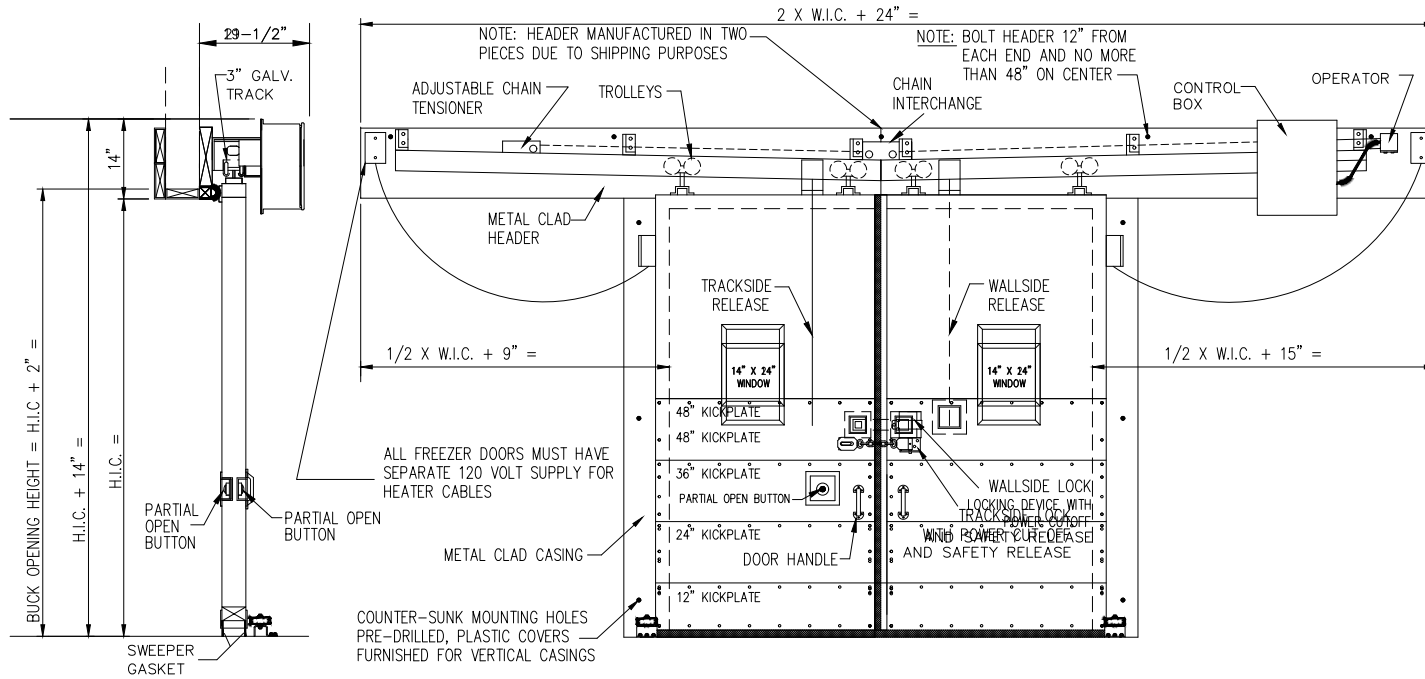
**SPECIAL INSTRUCTIONS TO MANUFACTURER:**

 A SENNECA COMPANY	JOB		CUSTOMER NO:		NO. PRINTS	FOR	DATE	REVISED
	SOLD TO		ORDER NO:					
			DRAWN BY:					
			SHEET	OF				

# ELECTRIC BI-PART SLIDING DOOR



## HORIZONTAL SECTION



## SIDE VIEW SECTION

## FRONT ELEVATION

 A SENNECA COMPANY	JOB		CUSTOMER NO:		NO. PRINTS		FOR		DATE		REVISED
	SOLD TO		ORDER NO:								
			DRAWN BY:								
			SHEET	OF							