

ELECTRIC HORIZONTAL SLIDING DOOR

DOOR STYLE:

ELECTRIC HORIZONTAL SLIDING DOOR

DOOR FRAME TYPE:

THREE SIDED FACE CASINGS RETURN JAMB
INSIDE CASINGS

OPENING SIZE:

FINISHED OPENING WIDTH (W.I.C.):
FINISHED OPENING HEIGHT (H.I.C.): WALL THICKNESS:

OPENING METHOD:

SLIDE LEFT TO OPEN SLIDE RIGHT TO OPEN

APPLICATION:

COOLER FREEZER 4" THICK 6" THICK

ENTER ROOM TEMPERATURES:

TEMPERATURE WALL SIDE: F (PLEASE PROVIDE)
TEMPERATURE TRACK SIDE: F (PLEASE PROVIDE)

CLADDING - TRACK SIDE:

EMBOSSED WHITE GALVANIZED. STAINLESS STEEL, EMBOSSED
EMBOSSED WHITE ALUMINUM
CUSTOM

CLADDING - WALL SIDE:

EMBOSSED WHITE GALVANIZED. STAINLESS STEEL, EMBOSSED
EMBOSSED WHITE ALUMINUM
CUSTOM

VISION WINDOW:

HEATED NON-HEATED 14" x 14" 14" x 24"

KICK PLATE - TRACK SIDE:

16 GA. GALVANIZED PLATE 1/8" DIAMOND PLATE STAINLESS STEEL
12" TALL 24" TALL 36" TALL 48" TALL

KICK PLATE - WALL SIDE:

16 GA. GALVANIZED PLATE 1/8" DIAMOND PLATE STAINLESS STEEL
12" TALL 24" TALL 36" TALL 48" TALL

ADDITIONAL OPTIONS:

TRACKSIDE LOCK WITH CUTOFF
SAFETY RELEASE
HEATED SEALS
JAMB CHANNEL TRIM


WICKET DOOR:

SIZING: HANDING: FURNISH EXTRA HINGE
36x84 HINGED ON LEFT
36x78 HINGED ON RIGHT
30x78

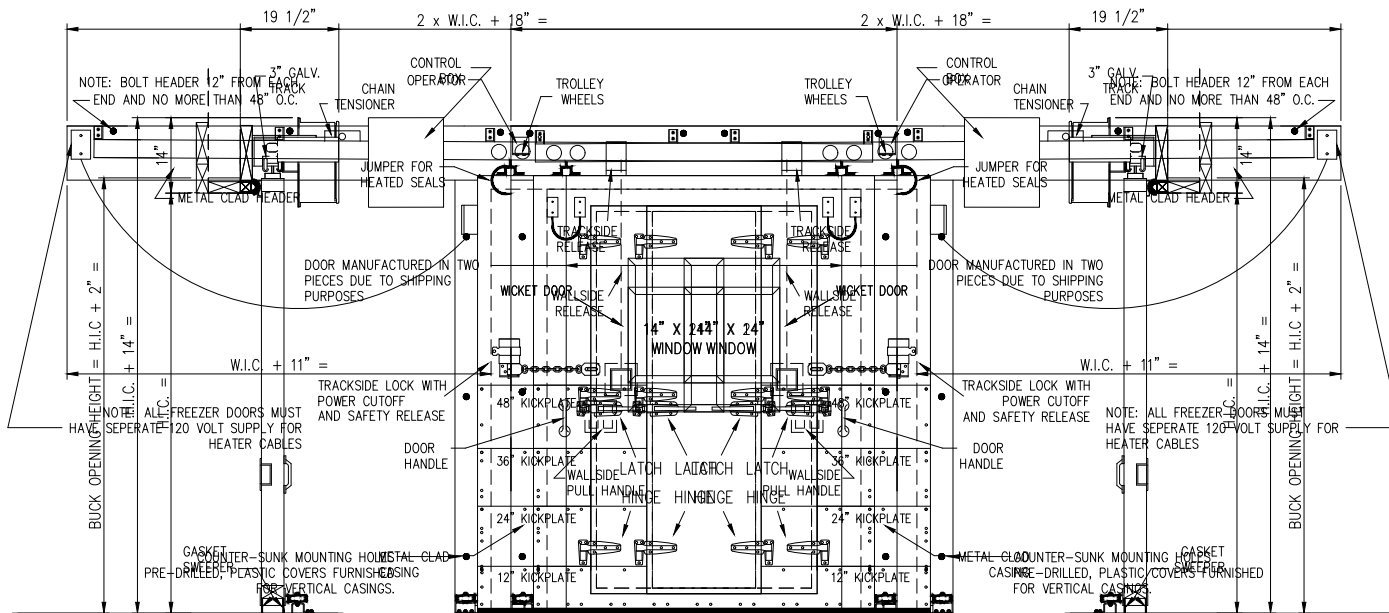
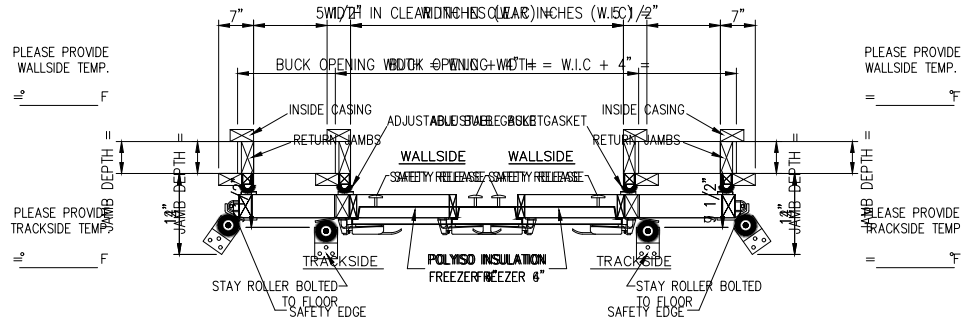
APPLICATION (REQUIRED):

1. IS THIS DOOR ON A BOX GREATER THAN 3000 SQ FEET? YES NO
2. IF NO, IS BOX LOCATED IN COLD STORAGE FACILITY/ATMOSPHERE WITH FLOOR AREA 3000 SQ FEET OR LARGER? (A/C IS NOT COLD STORAGE) YES NO
3. DOES THIS APPLICATION INVOLVE MEDICAL, SCIENTIFIC, OR RESEARCH FACILITIES? YES NO

SPECIAL INSTRUCTIONS TO MANUFACTURER:

 A SENNECA COMPANY	JOB		CUSTOMER NO:		NO. PRINTS	FOR	DATE	REVISED
	SOLD TO		ORDER NO:					
			DRAWN BY:					
			SHEET	OF				

ELECTRIC HORIZONTAL SLIDING DOOR



SIDE VIEW SECTION

FRONT ELEVATION

FRONT ELEVATION

SIDE VIEW SECTION

HERCULES

A SENNECA COMPANY

JOB _____

SOLD TO _____

CUSTOMER NO: _____

ORDER NO: _____

DRAWN BY: _____

SHEET _____ OF _____

NO. PRINTS _____

FOR _____

DATE _____

REVISED _____