

INFITTING SINGLE SWING DOOR, FOUR SIDED FRAME

DOOR STYLE:

INFITTING W/ FRAME

DOOR FRAME TYPE:

FOUR SIDED FACE CASINGS RETURN JAMB 3 SIDED
 INSIDE CASINGS RETURN JAMB 4 SIDED
 DOUBLE SILL

OPENING SIZE:

FINISHED OPENING WIDTH (W.I.C.):
 FINISHED OPENING HEIGHT (H.I.C.): WALL THICKNESS:

OPENING METHOD:

HINGED ON LEFT HINGED ON RIGHT

APPLICATION:

COOLER FREEZER 4" THICK 6" THICK
 (FREEZER DOORS COME STANDARD WITH HEAT 3 SIDES AND DOOR BOTTOM)

ENTER ROOM TEMPERATURES:

TEMPERATURE WALL SIDE: F (PLEASE PROVIDE)
 TEMPERATURE HINGE SIDE: F (PLEASE PROVIDE)

CLADDING - HINGE SIDE:

EMBOSSED WHITE GALVANIZED. STAINLESS STEEL, EMBOSSED
 EMBOSSED WHITE ALUMINUM
 CUSTOM

CLADDING - WALL SIDE:

EMBOSSED WHITE GALVANIZED. STAINLESS STEEL, EMBOSSED
 EMBOSSED WHITE ALUMINUM
 CUSTOM

LATCH:

STANDARD PADLOCK-ABLE LATCH
 STANDARD W/ KEY LOCK
 STAINLESS
 STAINLESS W/ KEY LOCK
 HEAVY DUTY LATCH
 POLAR LATCH
 STANDARD INSIDE RELEASE PANIC DEVICE
 PUSH BAR WITH LATCH LEVER W/ KEY

HINGES:

1245 CHROME HINGES 1245 IMPERIAL WHITE HINGES
 STAINLESS STEEL HINGES KASONIZED STRAP HINGES
 FURNISH THREE HINGES POLAR 305 STRAP HINGES

DOOR CLOSER:

NONE (STD)
 STAINLESS STEEL KASONIZED

VISION WINDOW:

HEATED NON-HEATED 14" x 14" 14" x 24"

KICK PLATE - HINGE SIDE:

16 GA. GALVANIZED PLATE 1/8" DIAMOND PLATE STAINLESS STEEL
 12" TALL 24" TALL 36" TALL 48" TALL

KICK PLATE - WALL SIDE:

16 GA. GALVANIZED PLATE 1/8" DIAMOND PLATE STAINLESS STEEL
 12" TALL 24" TALL 36" TALL 48" TALL


ADDITIONAL OPTIONS:

JAMB CHANNEL TRIM
 ELECTRIC STRIKE W/ PANIC BAR ONLY
 MANUFACTURER PROVIDE ELECTRIC STRIKE WIRING
 BLOCKING FOR MAG-LOCK INCLUDED
 RAIN HOOD

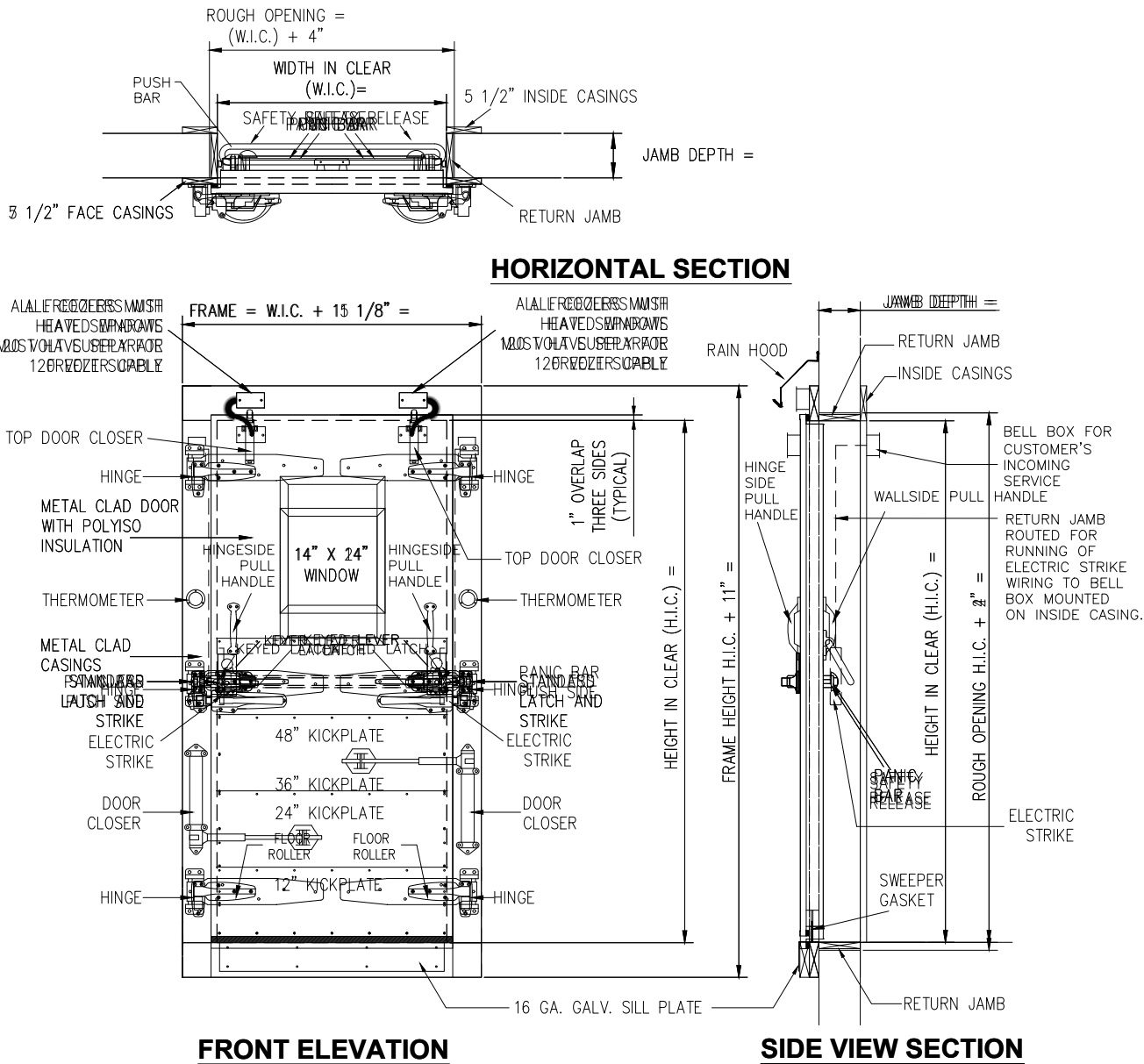
APPLICATION (REQUIRED):

1. IS THIS DOOR ON A BOX GREATER THAN 3000 SQ FEET? YES NO
2. IF NO, IS BOX LOCATED IN COLD STORAGE FACILITY/ATMOSPHERE WITH FLOOR AREA 3000 SQ FEET OR LARGER? (A/C IS NOT COLD STORAGE) YES NO
3. DOES THIS APPLICATION INVOLVE MEDICAL, SCIENTIFIC, OR RESEARCH FACILITIES? YES NO

SPECIAL INSTRUCTIONS TO MANUFACTURER:

 A SENNECA COMPANY	JOB		CUSTOMER NO:		NO. PRINTS	FOR	DATE	REVISED
	SOLD TO		ORDER NO:					
			DRAWN BY:					
			SHEET	OF				

INFITTING SINGLE SWING DOOR, FOUR SIDED FRAME



HERCULES

A SENNECA COMPANY

JOB	CUSTOMER NO:		NO. PRINTS	FOR	DATE	REVISED
	ORDER NO:					
	DRAWN BY:					
	SHEET	OF				
SOLD TO						