

INFITTING DOUBLE SWING DOOR, THREE SIDED FRAME

DOOR STYLE:

INFITTING W/ FRAME

DOOR FRAME TYPE:

THREE SIDED FACE CASINGS RETURN JAMB
INSIDE CASINGS

OPENING SIZE:

FINISHED OPENING WIDTH (W.I.C.):
FINISHED OPENING HEIGHT (H.I.C.): WALL THICKNESS:

STATIONARY DOOR LOCATIONS:

ON LEFT ON RIGHT (STD)

APPLICATION:

COOLER FREEZER 4" THICK 6" THICK
(FREEZER DOORS COME STANDARD WITH HEAT IN 3 SIDES OF THE FRAME, DOOR PANEL, AND DOOR BOTTOM)

ENTER ROOM TEMPERATURES:

TEMPERATURE WALL SIDE: F (PLEASE PROVIDE)
TEMPERATURE HINGE SIDE: F (PLEASE PROVIDE)

CLADDING - HINGE SIDE:

EMBOSSSED WHITE GALVANIZED. STAINLESS STEEL, EMBOSSSED
EMBOSSSED WHITE ALUMINUM
CUSTOM

CLADDING - WALL SIDE:

EMBOSSSED WHITE GALVANIZED. STAINLESS STEEL, EMBOSSSED
EMBOSSSED WHITE ALUMINUM
CUSTOM

LATCH:

STANDARD PADLOCK-ABLE LATCH
STANDARD W/ KEY LOCK
STAINLESS
STAINLESS W/ KEY LOCK
HEAVY DUTY LATCH
POLAR LATCH
STANDARD INSIDE RELEASE PANIC DEVICE
PUSH BAR WITH LATCH LEVER W/ KEY
TRUCK HARDWARE

HINGES:

1245 CHROME HINGES 1245 IMPERIAL WHITE HINGES
STAINLESS STEEL HINGES KASONIZED STRAP HINGES
HINGE QTY: POLAR 305 STRAP HINGES

DOOR CLOSER:

NONE (STD)
STAINLESS STEEL KASONIZED

VISION WINDOW:

HEATED NON-HEATED 14" x 14" 14" x 24"

KICK PLATE - HINGE SIDE:

1/16" DIAMOND PLATE 1/8" DIAMOND PLATE STAINLESS STEEL
12" TALL 24" TALL 36" TALL 48" TALL

KICK PLATE - WALL SIDE:

1/16" DIAMOND PLATE 1/8" DIAMOND PLATE STAINLESS STEEL
12" TALL 24" TALL 36" TALL 48" TALL


ADDITIONAL OPTIONS:

JAMB CHANNEL TRIM
FLOOR ROLLER LEFT LEAF RIGHT LEAF
RAIN HOOD

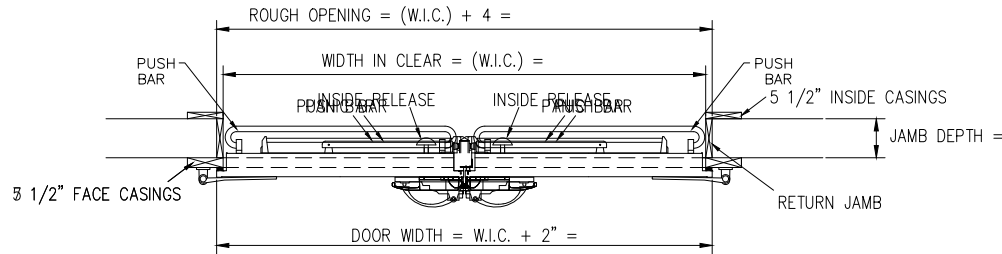
APPLICATION (REQUIRED):

1. IS THIS DOOR ON A BOX GREATER THAN 3000 SQ FEET? YES NO
2. IF NO, IS BOX LOCATED IN COLD STORAGE FACILITY/ATMOSPHERE WITH FLOOR AREA 3000 SQ FEET OR LARGER? (A/C IS NOT COLD STORAGE) YES NO
3. DOES THIS APPLICATION INVOLVE MEDICAL, SCIENTIFIC, OR RESEARCH FACILITIES? YES NO

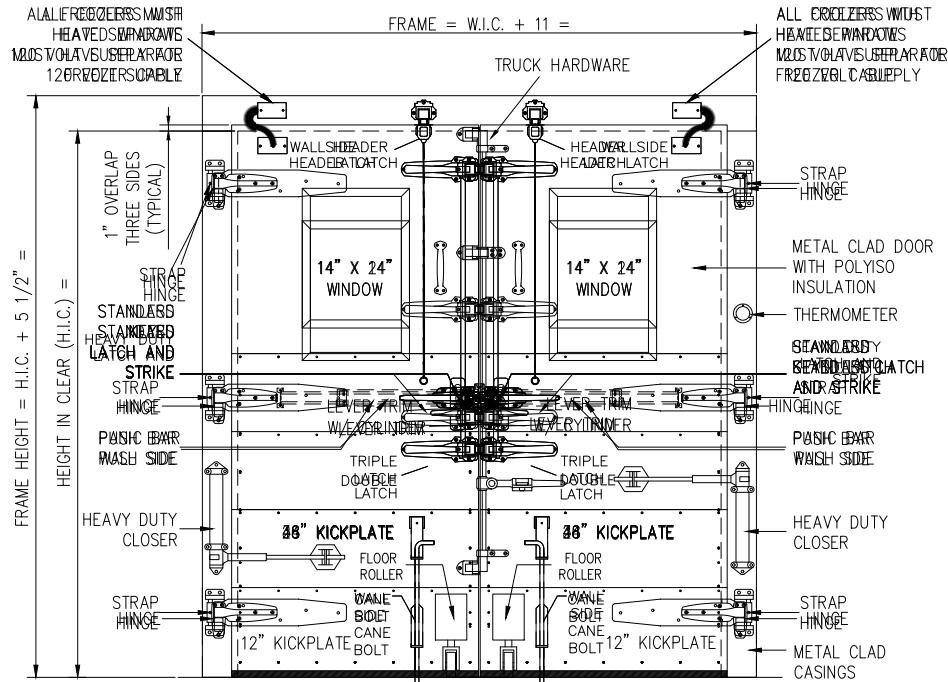
SPECIAL INSTRUCTIONS TO MANUFACTURER:

 A SENNECA COMPANY	JOB		CUSTOMER NO:		NO. PRINTS	FOR	DATE	REVISED
	SOLD TO		ORDER NO:					
			DRAWN BY:					
			SHEET	OF				

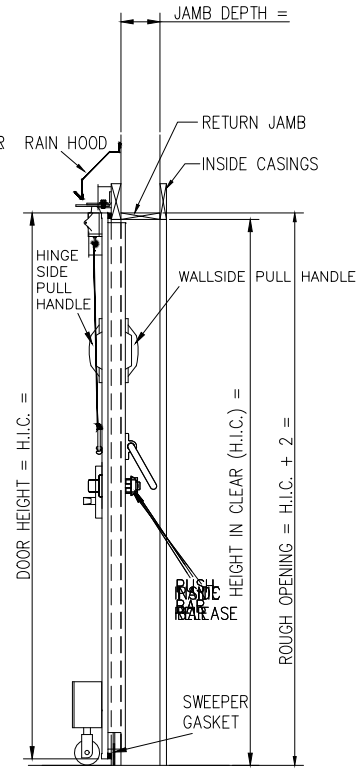
INFITTING DOUBLE SWING DOOR, THREE SIDED FRAME



HORIZONTAL SECTION



FRONT ELEVATION



SIDE VIEW SECTION

HERCULES

A SENNECA COMPANY

JOB

SOLD TO

CUSTOMER NO:

ORDER NO:

DRAWN BY:

SHEET OF

NO. PRINTS

FOR

DATE

REVISED