

INFITTING SINGLE SWING DOOR, THREE SIDED FRAME

DOOR STYLE:

INFITTING W/ FRAME

DOOR FRAME TYPE:

THREE SIDED FACE CASINGS RETURN JAMB
INSIDE CASINGS

OPENING SIZE:

FINISHED OPENING WIDTH (W.I.C.):
FINISHED OPENING HEIGHT (H.I.C.): WALL THICKNESS:

OPENING METHOD:

HINGED ON LEFT HINGED ON RIGHT

APPLICATION:

COOLER FREEZER 4" THICK 6" THICK
(FREEZER DOORS COME STANDARD WITH HEAT IN 3 SIDES OF THE FRAME, DOOR
PANEL, AND DOOR BOTTOM)

ENTER ROOM TEMPERATURES:

TEMPERATURE WALL SIDE: F (PLEASE PROVIDE)
TEMPERATURE HINGE SIDE: F (PLEASE PROVIDE)

CLADDING - HINGE SIDE:

EMBOSSED WHITE GALVANIZED. STAINLESS STEEL, EMBOSSED
EMBOSSED WHITE ALUMINUM
CUSTOM

CLADDING - WALL SIDE:

EMBOSSED WHITE GALVANIZED. STAINLESS STEEL, EMBOSSED
EMBOSSED WHITE ALUMINUM
CUSTOM

LATCH:

STANDARD PADLOCK-ABLE LATCH
STANDARD W/ KEY LOCK
STAINLESS
STAINLESS W/ KEY LOCK
HEAVY DUTY LATCH
POLAR LATCH
STANDARD INSIDE RELEASE PANIC DEVICE
PUSH BAR WITH LATCH LEVER W/ KEY

HINGES:

1245 CHROME HINGES	1245 IMPERIAL WHITE HINGES
STAINLESS STEEL HINGES	KASONIZED STRAP HINGES
FURNISH THREE HINGES	POLAR 305 STRAP HINGES

DOOR CLOSER:

NONE (STD)	KASONIZED
STAINLESS STEEL	

VISION WINDOW:

HEATED	NON-HEATED	14" x 14"	14" x 24"
--------	------------	-----------	-----------

KICK PLATE - HINGE SIDE:

16 GA. GALVANIZED PLATE	1/8" DIAMOND PLATE	STAINLESS STEEL
12" TALL 24" TALL	36" TALL 48" TALL	

KICK PLATE - WALL SIDE:

16 GA. GALVANIZED PLATE	1/8" DIAMOND PLATE	STAINLESS STEEL
12" TALL 24" TALL	36" TALL 48" TALL	


ADDITIONAL OPTIONS:

JAMB CHANNEL TRIM
ELECTRIC STRIKE W/ PANIC BAR ONLY
MANUFACTURER PROVIDE ELECTRIC STRIKE WIRING
FLOOR ROLLER
BLOCKING FOR MAG-LOCK INCLUDED
RAIN HOOD

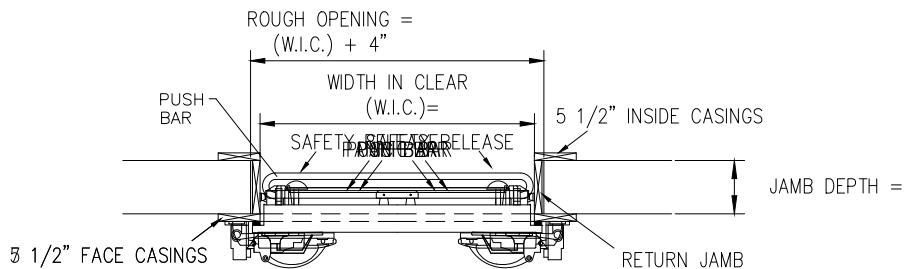
APPLICATION (REQUIRED):

- | | | |
|---|-----|----|
| 1. IS THIS DOOR ON A BOX GREATER THAN 3000 SQ FEET? | YES | NO |
| 2. IF NO, IS BOX LOCATED IN COLD STORAGE FACILITY/ATMOSPHERE WITH FLOOR
AREA 3000 SQ FEET OR LARGER? (A/C IS NOT COLD STORAGE) | YES | NO |
| 3. DOES THIS APPLICATION INVOLVE MEDICAL, SCIENTIFIC, OR RESEARCH
FACILITIES? | YES | NO |

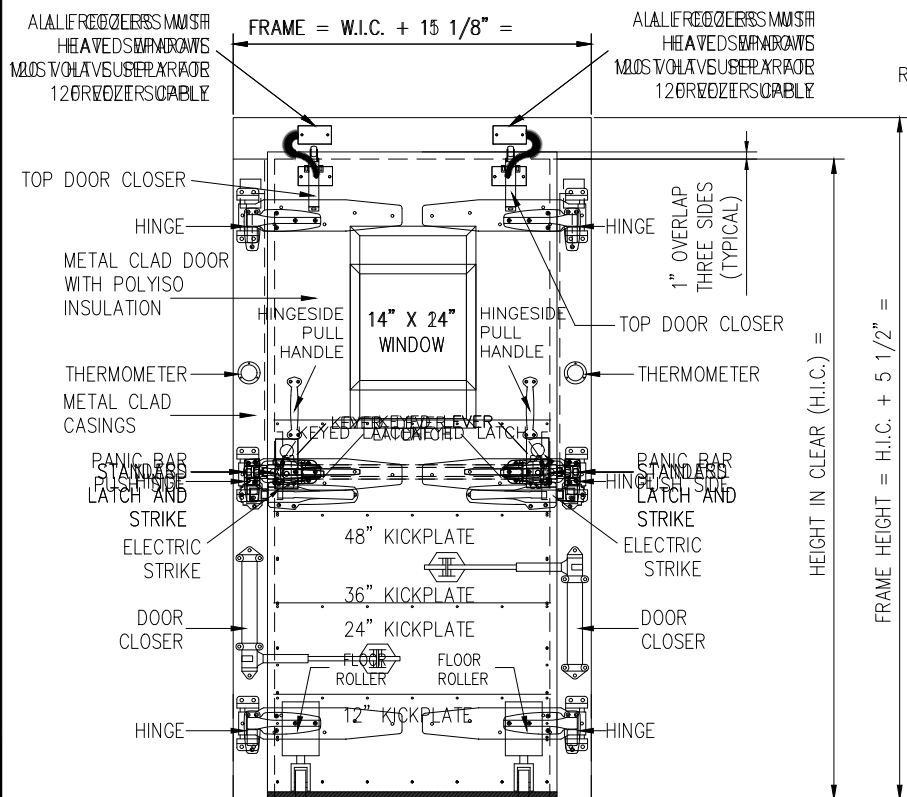
SPECIAL INSTRUCTIONS TO MANUFACTURER:

 A SENNECA COMPANY	JOB		CUSTOMER NO:		NO. PRINTS	FOR	DATE	REVISED
	SOLD TO		ORDER NO:					
			DRAWN BY:					
			SHEET	OF				

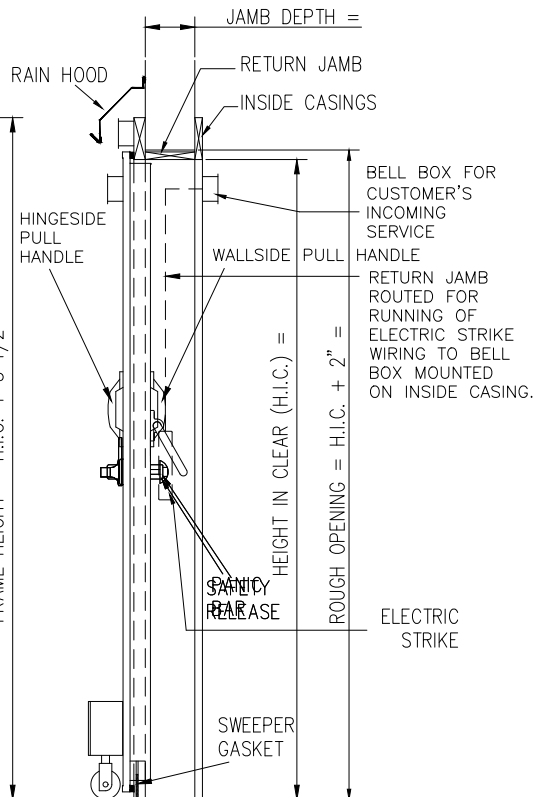
INFITTING SINGLE SWING DOOR, THREE SIDED FRAME



HORIZONTAL SECTION



FRONT ELEVATION



SIDE VIEW SECTION

 A SENNECA COMPANY	JOB		CUSTOMER NO:		NO. PRINTS	FOR	DATE	REVISED
	SOLD TO		ORDER NO:					
			DRAWN BY:					
			SHEET	OF				