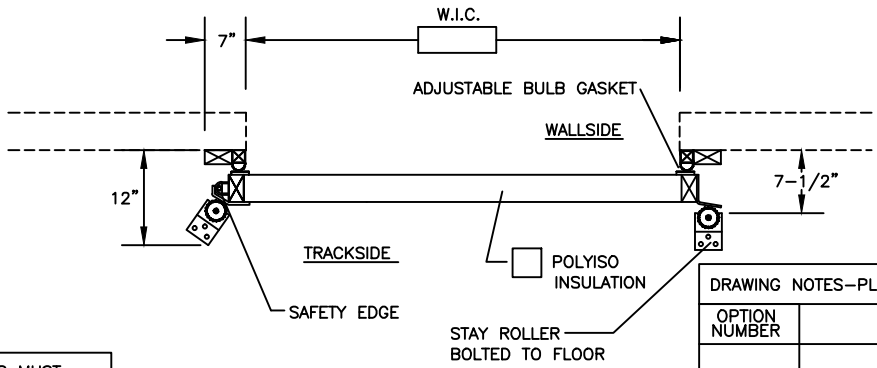


NOTE: RIGHT SLIDE SHOWN, LEFT SLIDE OPPOSITE



NOTE: ALL FREEZER DOORS MUST HAVE SEPERATE 120 VOLT SUPPLY FOR HEATER CABLES

DRAWING NOTES—PLEASE SPECIFY ALL AREAS MARKED OTHER

OPTION NUMBER	DESCRIPTION

INSTALLATION REQUIREMENTS

- I. THE FLOOR UNDER THE DOOR MUST BE LEVEL AND SMOOTH
- II. THE WALL BEHIND THE DOOR FRAME MUST BE SMOOTH AND IN A COMMON PLANE

DOOR PANEL AND FRAME

1. DOOR THICKNESS
4" 6" (FREEZER ONLY)
2. TEMPERATURES
WALL SIDE TRACKSIDE
= _____ °F = _____ F
3. SLIDE DIRECTION
LEFT
RIGHT
4. PANEL AND FRAME CLADDING
WHITE STUCCO EMBOSSED GALV STEEL
MILL FINISH STUCCO EMBOSSED STEEL
STAINLESS STEEL
SANDSTONE STUCCO EMBOSSED GALV STEEL
WHITE STUCCO EMBOSSED ALUMINUM
MILL FINISH STUCCO EMBOSSED ALUMINUM
5. JAMBS
JAMB DEPTH _____
HDPE CLAD IN SAME MATL AS DOOR
CHANNEL TRIM
OTHER
6. OPERATOR
STANDARD OPERATOR
HIGH SPEED OPERATOR

OPTIONS

7. FREEZER DOOR
HEATER WIRE RUN AROUND PERIMETER OF DOOR LEAF AND IN BOTTOM OF DOOR
8. INSIDE CASINGS
9. HOOD
MATCHED TO FACE OF DOOR
OTHER
10. KICKPLATES
TRACKSIDE WALLSIDE
HEIGHT: 18" 24" 36" 48" OTHER
ALUMINUM DIAMOND PLATE
18 GA. STAINLESS STEEL
16 GA. GALV. STEEL
OTHER
11. VISION PANEL
12 3/4" X 12 3/4" INSULATED
12 3/4" X 12 3/4" HEATED
OTHER
12. LOCKING DEVICE
TRACKSIDE WALLSIDE
WITH POWER CUTOFF AND SAFETY RELEASE
WITH POWER CUTOFF - NO SAFETY RELEASE
13. RADIO CONTROL
14. TIMER DELAY CLOSE
15. PHOTOCCELL
TO OPEN AS SAFETY
16. MOTION DETECTOR
TO OPEN AS SAFETY
17. LOOP DETECTOR
TO OPEN AS SAFETY

JOB	DOOR NO.	QTY.	W.I.C.	H.I.C.	USE	VOLTAGE	LOCK	FINISH COVERING	GAGE	SLIDE

HERCULES
Renowned, resilient doors. By Kingspan

ELECTRIC HORIZONTAL SLIDING DOOR	
SCALE: NONE	DRAWN BY
DATE:	Job No.
For:	DRAWING NUMBER